

## WMF

### Handles for kitchen tools

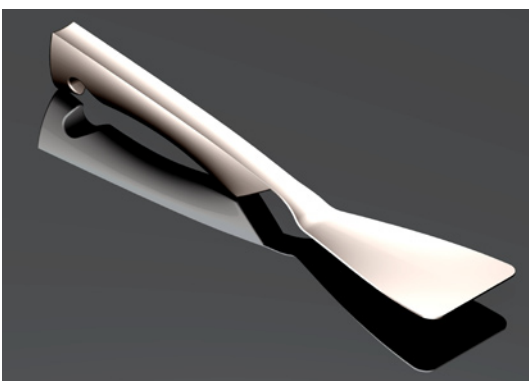
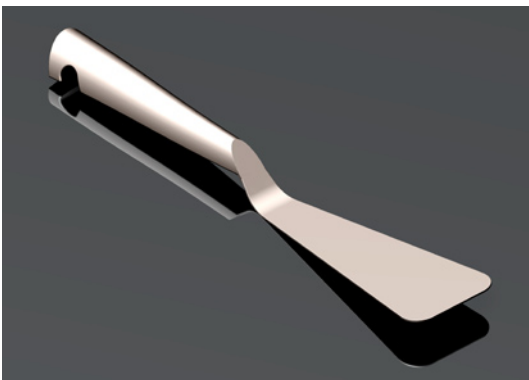
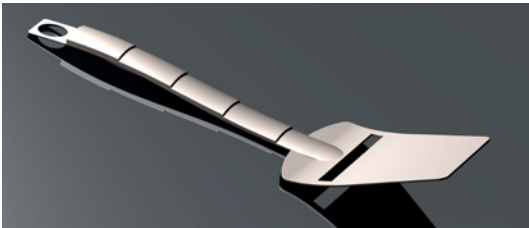
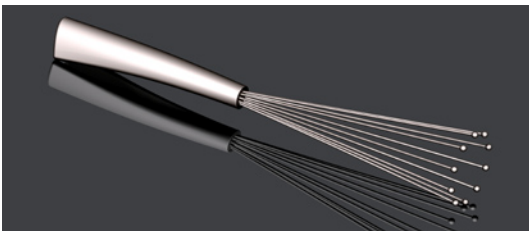
HID came up with four design proposals for a new type of handle for kitchen utensils. The aim was to arrive at a kitchen-to-table solution.

The idea behind all four versions is the option of combining one style of handle with a wide range of utensils - from the kitchen knife to the bottle-opener.

The handles were created following in-depth analysis of the ergonomics involved.

The handles are welded in stainless steel, featuring an easy-clean satin surface for good kitchen hygiene.

Each utensil comes integrated with a handle section.



**Client:** WMF

**Product:** Handles for kitchen tools